

FULDEMANDSOPTRIN

Arr.: Peter Bagger Nielsen 97

A

Peder Skyt: 2gange + forspil



5



9

forspil ->



13



18

B

Damernes fornøjelse: 1 gang



23



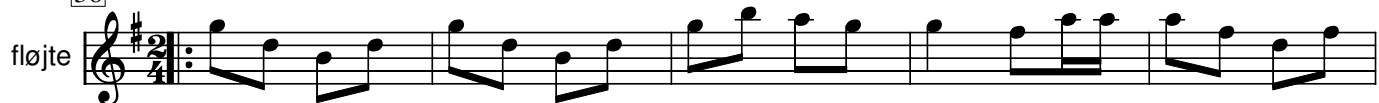
27



31



36



41



45

C

Gamle Berliner: 2 gange 1.gang spilles B-stk 4 gange 2.gang kun 2 gar




49




Fuldemandsoptrin

53 fløjte



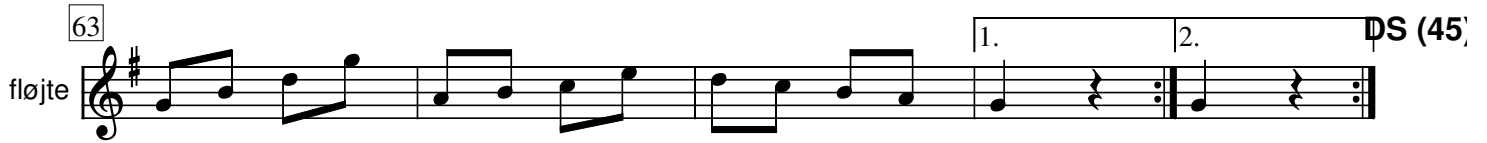
Musical staff for measure 53, starting with a treble clef and a key signature of one sharp (F#). The staff contains a sequence of eighth and sixteenth notes.

58 fløjte



Musical staff for measure 58, continuing the melody with eighth and sixteenth notes.

63 fløjte



Musical staff for measure 63, featuring first and second endings. The first ending leads to measure 68, and the second ending leads to measure 76. The staff ends with a double bar line and repeat dots.

68 fløjte **D** Gammel mands hopsa, 2 gange



Musical staff for measure 68, starting with a new section marked 'D' and a key signature change to two sharps (F# and C#). The staff contains eighth and sixteenth notes.

72 fløjte



Musical staff for measure 72, continuing the melody.

76 fløjte **DS (68)**



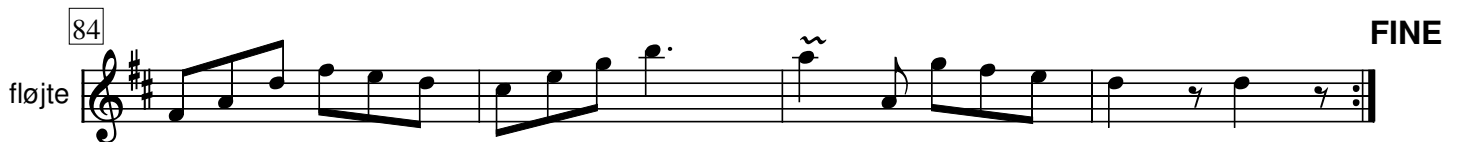
Musical staff for measure 76, ending with a double bar line and repeat dots. The label 'DS (68)' is positioned at the end of the staff.

80 fløjte **E** Sekstur 2. 1 gange + A-stk



Musical staff for measure 80, starting with a new section marked 'E' and a key signature change to three sharps (F#, C#, and G#). The staff contains eighth and sixteenth notes.

84 fløjte **FINE**



Musical staff for measure 84, ending with a double bar line and repeat dots. The label 'FINE' is positioned at the end of the staff.

88 fløjte



Musical staff for measure 88, continuing the melody.

92 fløjte



Musical staff for measure 92, continuing the melody.

96 fløjte



Musical staff for measure 96, continuing the melody.

100 fløjte **DS al FINE (80)**



Musical staff for measure 100, ending with a double bar line and repeat dots. The label 'DS al FINE (80)' is positioned at the end of the staff.